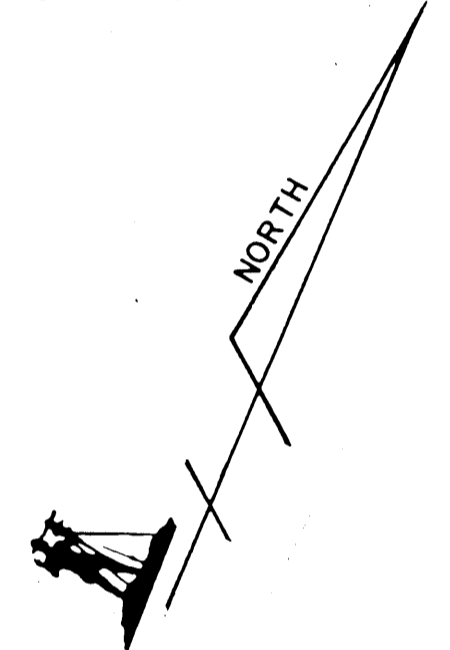
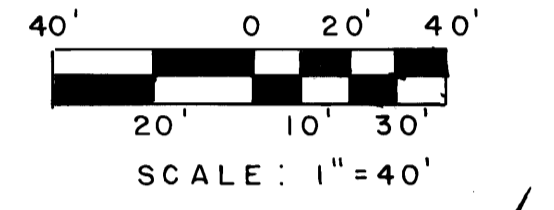
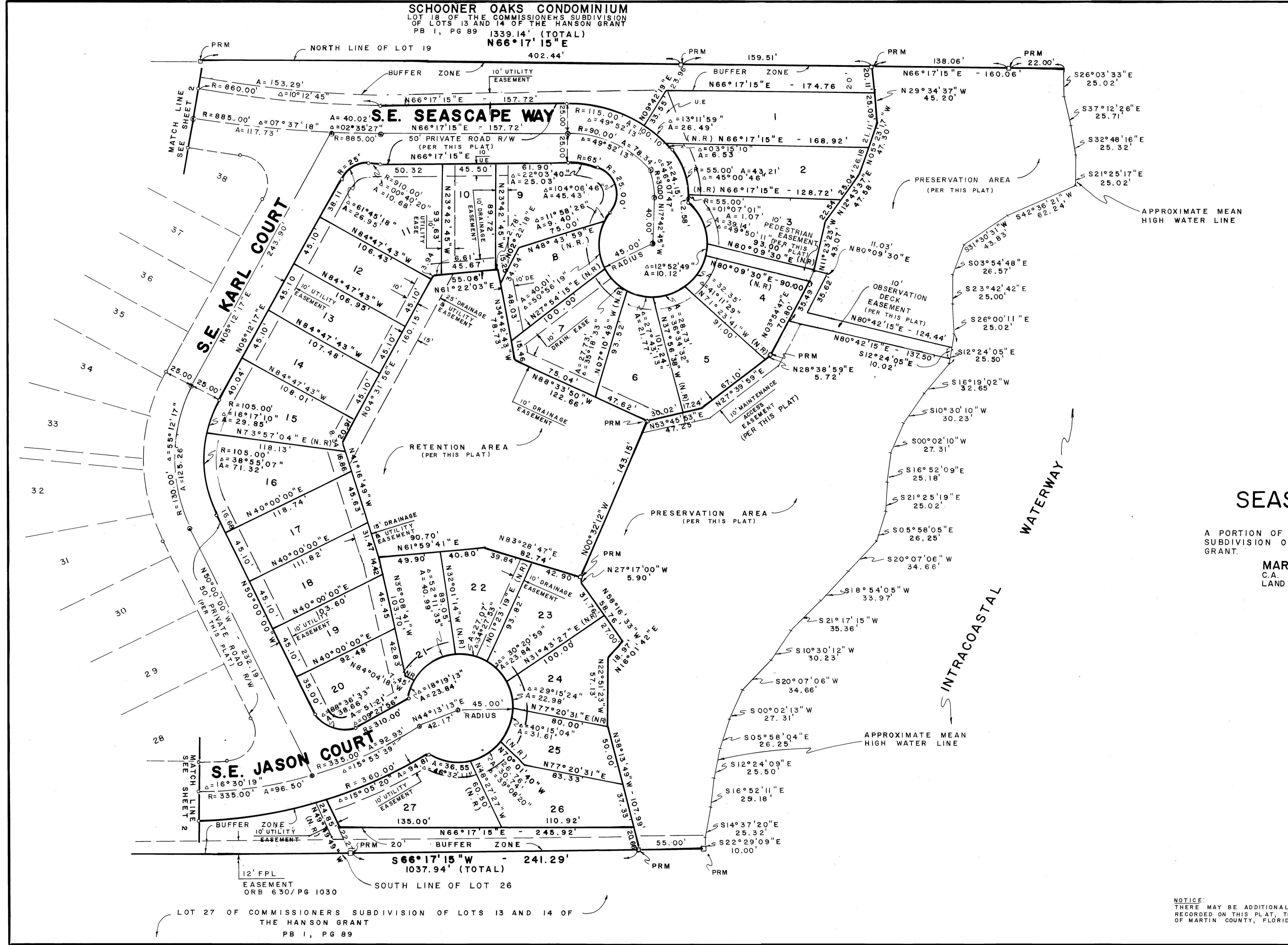


I, MARSHA STILLER, CLERK OF THE CIRCUIT COURT OF MARTIN COUNTY, FLORIDA, HEREBY CERTIFIES THAT THIS PLAT WAS FILED FOR RECORD IN PLAT BOOK 12, PAGE 32, MARTIN COUNTY, FLORIDA PUBLIC RECORDS, THIS DAY OF 19 A.D.

MARSHA STILLER
CIRCUIT COURT
MARTIN COUNTY, FL

FILE N° _____

BY: _____
DEPUTY CLERK



SEASCAPE II, P.U.D.

A REPLAT OF
A PORTION OF LOTS 19 AND 26 OF THE COMMISSIONERS SUBDIVISION OF LOTS 13 AND 14 OF THE HANSON GRANT.
PLAT BOOK 1, PAGE 89
MARTIN COUNTY, FLORIDA
C.A. MITCHELL AND ASSOCIATES INC.
LAND SURVEYORS - LANDPLANNERS

NOTICE: THERE MAY BE ADDITIONAL MATTERS OF RECORD THAT ARE NOT RECORDED ON THIS PLAT, THAT MAY BE FOUND IN THE PUBLIC RECORDS OF MARTIN COUNTY, FLORIDA.